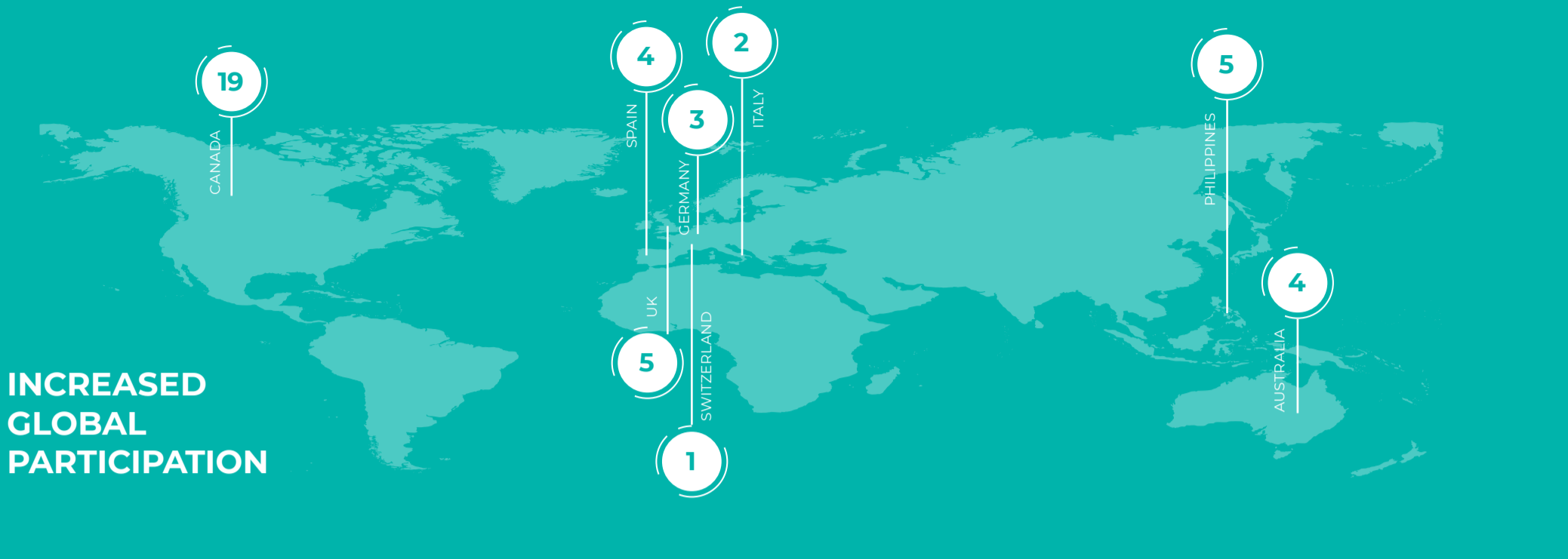


Shutdown Excellence Project

Mar-Jun 2023

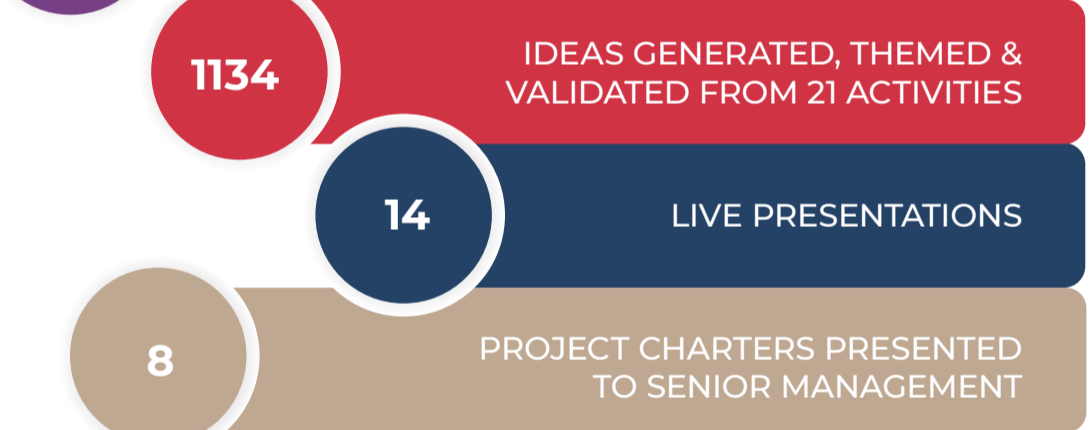


INCREASED GLOBAL PARTICIPATION

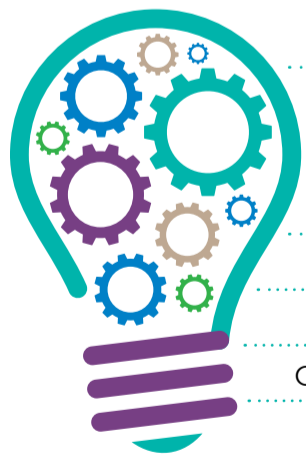
VIRTUAL



FACE TO FACE



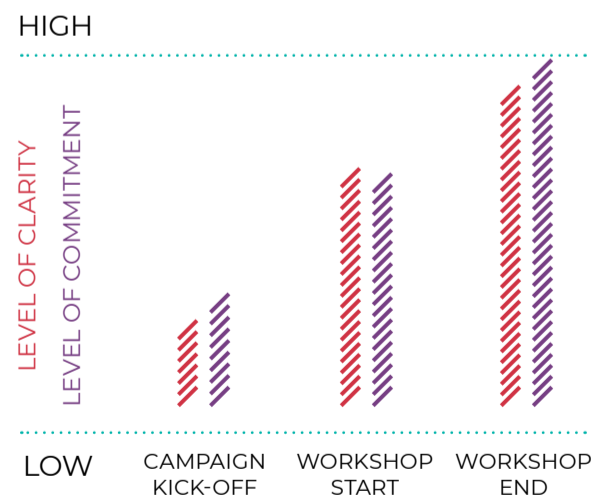
COMMUNICATIONS



- INVITATIONS
- PRESENTATION VIDEOS
- PHOTO GALLERIES
- WORKSHOP RECAPS
- EVENT OVERVIEW
- ONLINE DOCUMENT HUB



BUILT ALIGNMENT

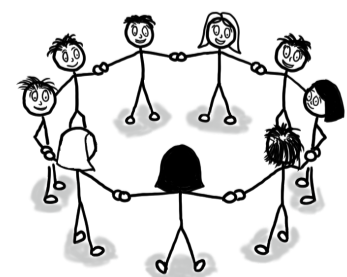


Mental health. Seeing someone show so much courage, I have never experienced this before.

We don't see often that kind of openness. It is good that we all showed some vulnerability. We currently have a low score in maturity when it comes to shutdown. In various maintenance aspects, we need to step up. We now have a good framework to support this.

The relationships we have built have been great. We are all working for the same company and I hope when we go back we will be working as team-mates moving forward.

How do we make sure that everyone is on the same level when we get to the workshop? This worried me before the live event, but I am amazed at how fast people are showing vulnerability in this workshop. Great conversations from day 1.



CONNECTIONS WERE CREATED